

- 1 Archaeological Collection
- 2 Botanical Garden
- 3 Collegium Jenense
- 4 Ernst Abbe Monument
- 5 Ernst Haackel House
- 6 Goethe Laboratorium
- 7 Grüne Tanne
- 8 Imaginata
- 9 Jentower / Observation platform
- 10 St. John's Cemetery and Church of Peace
- 11 St. John's Gate & Powder Tower
- 12 Johannes Church
- 13 Market square with Hanfried monument & the historical town hall
- 14 Mineralogical Collection
- 15 Museum 1806, Jena-Cospeda
- 16 German Optical Museum (closed until 2027)
- 17 Paradies / Volkspark Oberaue
- 18 Museum of Phylogenetics
- 19 Romantists' house
- 20 Schiller Church
- 21 Schiller's Summer House
- 22 SCHOTT Villa
- 23 St. Michael Town Church
- 24 Jena Municipal Museum & Art Collection
- 25 Theatre House
- 26 Volksbad Jena
- 27 Volkshaus Jena
- 28 Zeiss Planetarium Jena
- 29 Carmelite Abbey
- 30 Anatomy Tower
- 31 Friedrich Schiller University
- Lockers for bicycle tourists
- Saale Cycle Route
- Towns of Thuringia Cycle Route
- Thuringian Mills Route
- Churches Cycle Route
- Walking trail Saalehorizontale
- Luther trail
- Jena Tourist Information
- Free WLAN via App MeinJena
- Bus
- Tram

28 ZEISS-PLANETARIUM JENA

Am Planetarium 5, phone +49 3641 885488
www.planetarium-jena.de



The Zeiss Planetarium in Jena has evolved into a high-tech venue that whisks visitors away on an unforgettable journey through the universe and beyond. There are programmes to keep all the family entertained, lectures and concerts.

Presentations: Tue-Sun and on request

21 SCHILLER'S SUMMER HOUSE

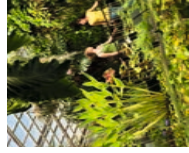


Schillergässchen 2, phone +49 3641 9401070
www.uni-jena.de/gartenhaus

Visitors can see the house where Schiller lived, the garden house and the kitchen house. The garden still has the old, oval stone table where Schiller and Goethe often sat and exchanged thoughts.

Tue-Sun (Apr-Oct) and Tue-Sat (Nov-Mar), 11am to 5pm

2 BOTANICAL GARDEN



Fürstengraben 26, phone +49 3641 949274
www.botanischergartenjena.de

The second oldest of their kind in Germany. A very large, ancient ginkgo tree serves as a reminder of times Goethe. Today, you can see more than 12,000 types of plant from all climate zones in the greenhouses and outdoor space.

Apr-Oct daily 10am to 7pm, Nov-Mar daily 10am to 6pm

18 MUSEUM OF PHYLOGENETICS



Vor dem Neutor 1, phone +49 3641 949180
www.phyletisches-museum.uni-jena.de

Founded by Ernst Haackel, this remarkable museum paints a vivid picture of evolution.

Tue-Fri 9am to 1pm, 2pm to 5pm, Sat-Sun 10am to 4pm. Closed 24., 25., 31.12., 1.1.

24 JENA MUNICIPAL MUSEUM & ART COLLECTION



Markt 7, phone +49 3641 498250
www.museen-jena.de

Exhibitions illustrating the history of the city, temporary exhibitions, the 7 Wonders of Jena.

Tue-Sun 10am to 5pm

19 ROMANTICISTS' HOUSE



Unterm Markt 12a, phone +49 3641 498243
www.romantikerhaus-jena.de

Literature museum in the former residence of the philosopher Johann Gottlieb Fichte. Audio Guides in English, French

Tue-Sun 10am to 5pm

14 MINERALOGICAL COLLECTION



Sellierstr. 6, phone +49 3641 948714
www.minersmlg.uni-jena.de

One of the oldest and biggest German university collections with around 80,000 items - including indigenous minerals, meteorites and tektites.

Mon/Thu 1pm to 5pm
Guided tours by arrangement

22 SCHOTT VILLA

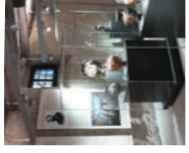


Otto-Schott-Str. 5, phone +49 3641 6815697
www.schott.com/museum

Otto Schott was one of the most influential chemists, engineers and entrepreneurs of his day. You can explore the many facets of his life and legacy at his former home, Schott Villa.

Tue-Thu 1pm to 5pm

1 ARCHAEOLOGICAL COLLECTION



Fürstengraben 25, phone +49 3641 944827
www.uni-jena.de

The Schwarz'sches Haus, which dates back to the 16th century, hosts regularly changing exhibitions that feature items from Jena University's antiquity collection or that focus on current topics in archaeology.

Guided tours by arrangement, opening times on request.

9 JENTOWER OBSERVATION PLATFORM



Leutra-graben 1, phone +49 3641 2080023
www.jentower.de

From 128 metres up you get phenomenal views of the city.

Mon-Sun 10am to 10pm



Tip for guests: 48 hours wifi even without app installation

Fully accessible

Not fully accessible

Full wheelchair access to WC

Limited wheelchair access to WC

Lift for wheelchair users available

Disabled parking bays available

Passenger lift

OTHER ATTRACTIONS IN JENA

- 4 Ernst Abbe Monument, Carl-Zeiss-Platz, designed by Henry van de Velde | 23 St. Michael Town Church, Kirchplatz 1, original bronze plate for Martin Luther's grave | 29 Carmelite Abbey, Engelplatz. This compact site is an idyllic spot for contemplation. The former abbey courtyard and the two remaining interior rooms, which include an exhibition on the abbey's history, invite visitors to stay and rest a while. | Ernst-Abbe-Platz/Campus with sculptures by Frank Stella and the first high-rise building in Germany | Villa Rosenthal, Mälzerstraße 11, a listed building, temporary exhibitions

Jena Tourist Information



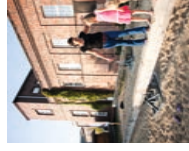
Markt 16, phone +49 3641 49-8050, fax +49 3641 49-8055

tourist-info@jena.de, www.visit-jena.de, facebook.com/visitjena, instagram.com/visitjena

Jena Tourist Information is based in one of the oldest houses in the city and with its impressive glass facade, the wooden living room from the Middle Ages and the atrium bathed in light it is a real highlight. Are you still looking for a gift or souvenir? Let us inspire you in our shop!

Mon-Fri 10am to 6pm, Sat 10am to 2pm, Public holidays 10am to 2pm, Closed 25., 26.12., 1.1., Good Friday, 1.5.

8 IMAGINATA



Löbstedter Str. 67, phone +49 3641 889920
www.imaginata.de

An Experimentarium for the senses with over 100 stations, giving you the opportunity to discover and experiment. Your powers of imagination will be put to the test.

Mon-Fri 10am to 3pm, public holiday plus Thuringian school holidays daily Mon-Sun 10am to 6pm

15 MUSEUM 1806



Jenaer Str. 12, 07751 Cospeda, phone +49 3641 820925, www.stadtmuseum-jena.de

Exhibition illustrating the prehistory and the course of the battle of Jena-Auerstedt on the 14th of October 1806 between the French armies led by Napoleon and the Prussian army. Retrace the past with Janet Cardiff's Audio Walk. Audio guides in German, English

Tue-Sun 10am to 1pm, 2pm to 5pm (Feb-Nov)

6 GOETHE LABORATORIUM



Fürstengraben 26, phone +49 3641 9401074,
www.goethe.uni-jena.de

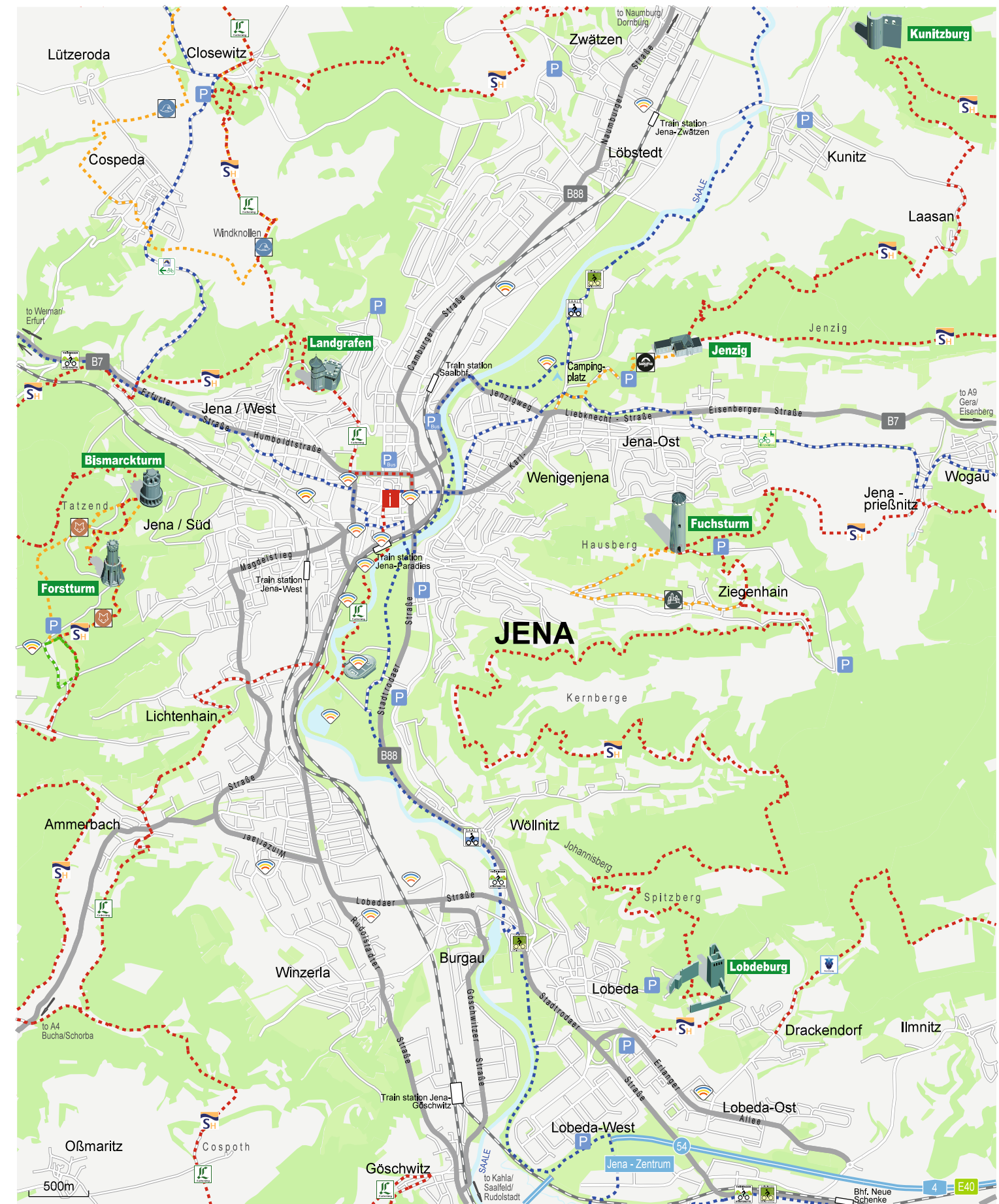
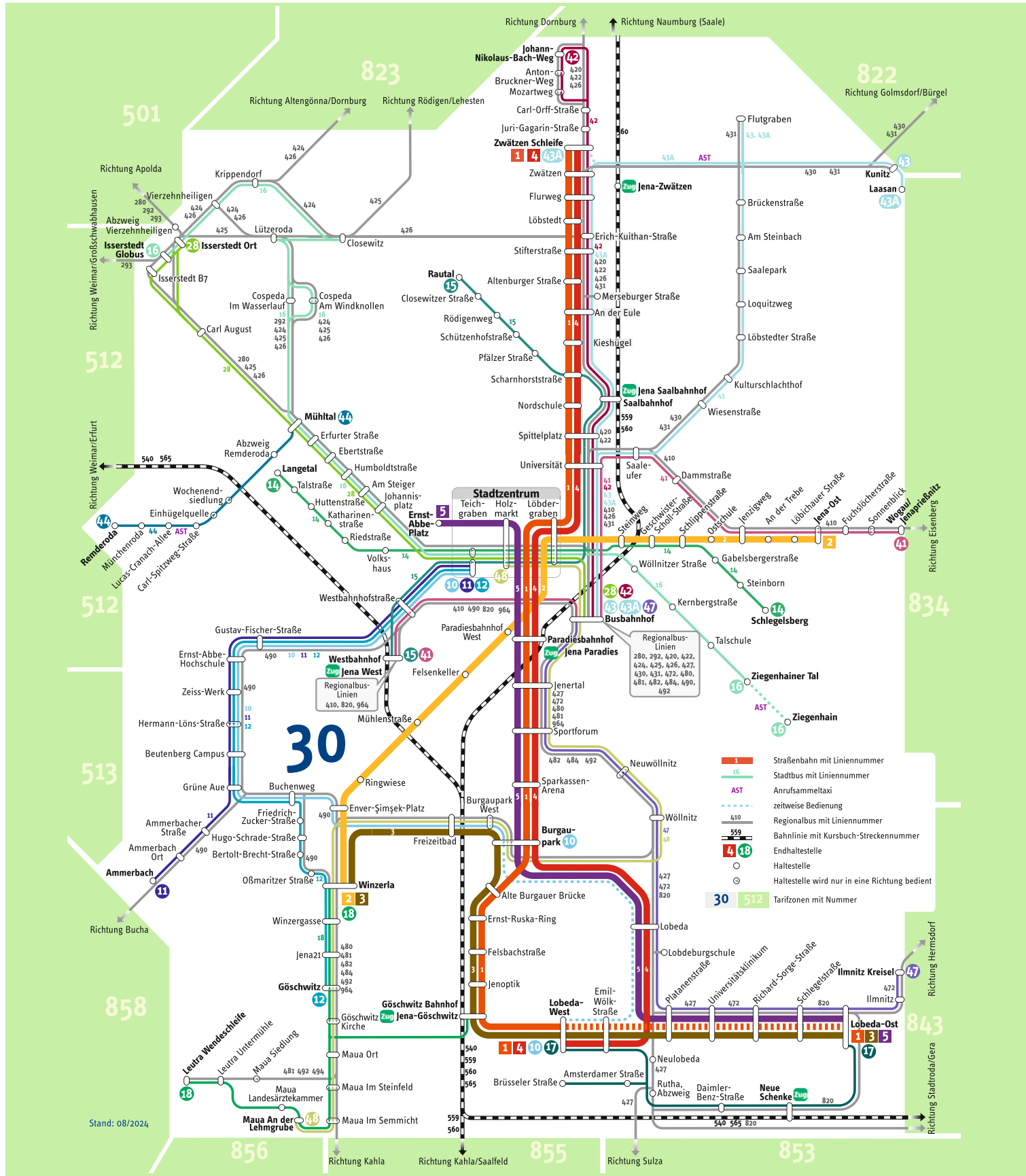
Entitled Bewegliche Ordnung (moving order), the new permanent exhibition at Friedrich Schiller University of Jena explores the fundamentals of Goethe's research in the natural sciences (particularly geology, anatomy and botany) and encourages visitors to truly engage with the subject matter.

Wed-Sun 11am to 5pm



Explore the most beautiful known and unknown corners of Jena - get inspired.





Stadtwerke Jena customer centre

Saalstraße 8a, phone: +49 3641 414354
www.nahverkehr-jena.de, info@nahverkehr-jena.de

Ticket sales and advice on all VMT-Tickets, advice to subscription cards, timetable information, information to roadworks and disorders, lost properties and souvenirs

Mon-Fri 8am to 6pm, Sat 9am to 2pm

How you find us: Universität, Steinweg
 14, 15, 41, 42, 43
 1, 2, 4

VMT-Servicephone

Phone: +49 361 19449

Information to fares, travel terms and conditions, roadworks and disorders of Jenaer Nahverkehr and the entire Verkehrsverbund Mittelthüringen (VMT)

Mon-Fri 6am to 9pm,
 Sat/Sun/Feast day 9am to 5pm

